

Application Note 3041

Central Controller Initial Settings Billing

Table of Contents

Introduction.....	3
Process.....	3
AE-200 LCD.....	4
License.....	4
Unit Info.....	4
Network.....	5
License cont. ([Initial Settings] > [License]).....	5
Billing Function Setting in the Initial Settings Tool.....	5
Energy Management Block Settings.....	5
PI Controller Settings.....	6
Billing Function Settings.....	6
Charge Calculation Tool.....	7

Introduction

The purpose of this application note is to explain how to setup a central controller to use the apportioned electricity billing function on the AE-200 centralized controller.

Process

1. Complete the normal initial settings as laid out in application note: “Central Controller Initial Setup”.
2. Complete the settings on the AE-200 LCD for the billing function.
 - a. License
 - b. Unit Info
 - c. Network
3. Complete the settings on the Initial Setting Tool for the billing function.
 - a. Energy management block settings
 - b. PI controller settings
 - c. Billing function settings
4. Complete the settings on the Charge Calculation Tool.

AE-200 LCD

License

Touch [Initial Settings] > [License]. Select [(b) Charge] in the [Selecting Optional Function] field. Enter the license number in [Registration of License Number] and touch [Register the license]. In order to get a license, fill out the licensing form on MyLinkDrive.

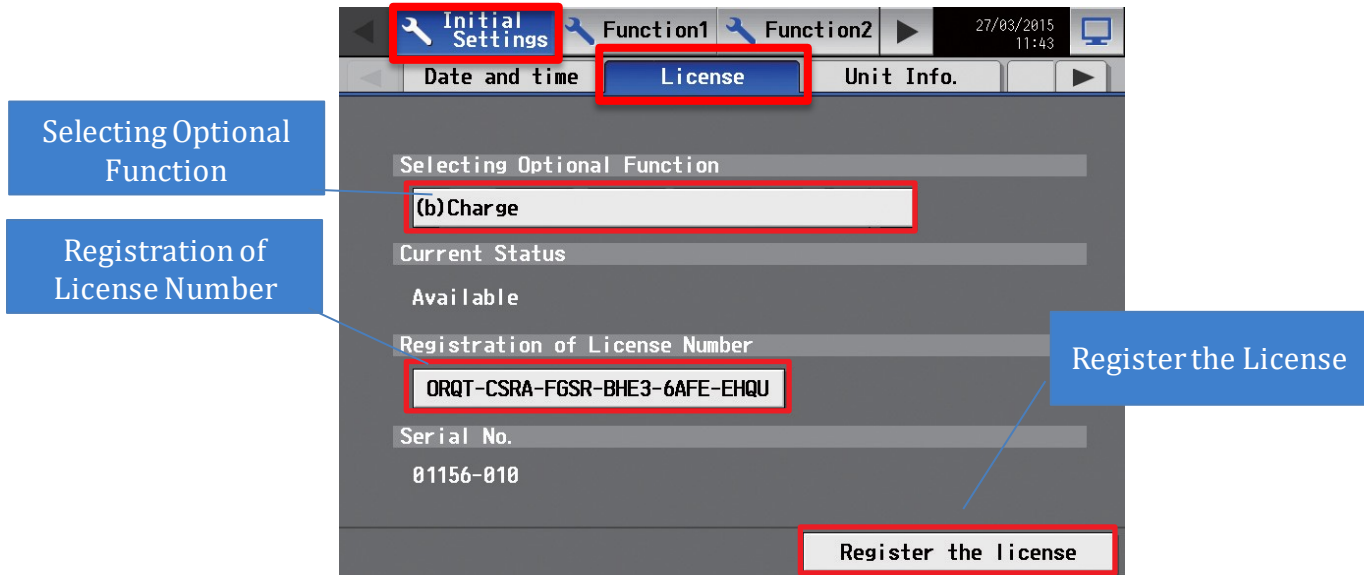


Figure 1. [Initial Settings] > [License]

Unit Info

Touch [Initial Settings] > [Unit Info.]. Set [System Exp] to [Expand], set [AE-200 Apportion] to [Use], and set [AE-200 M-NET] to [Do not use].

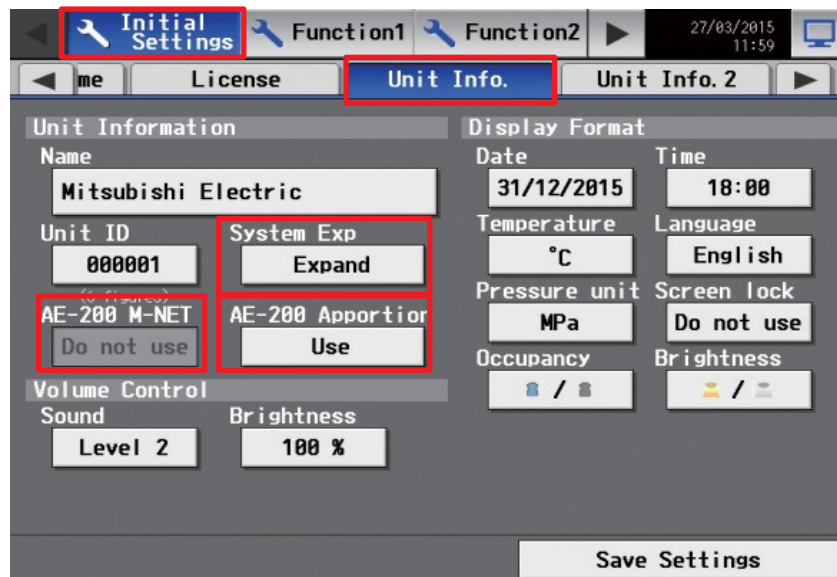


Figure 2. [Initial Settings] > [Unit Info.]

Network

Touch [Initial Settings] > [Network]. Switch between each controller to set the destination IP address in [LAN Settings].

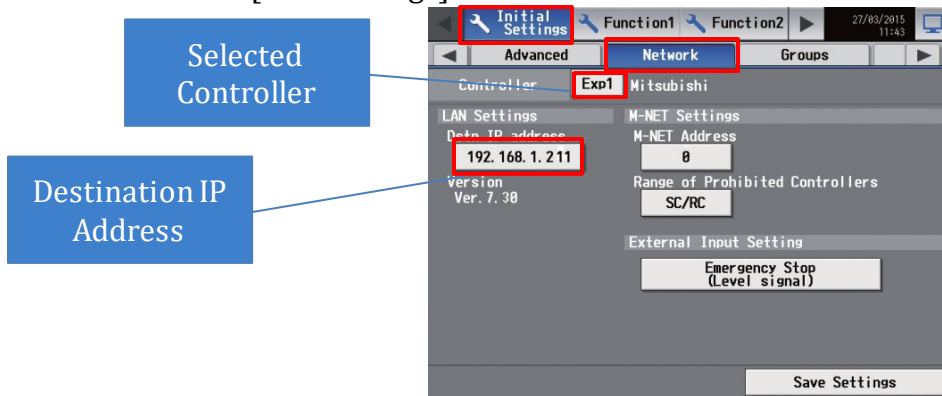


Figure 3. [Initial Settings] > [Network]

License cont. ([Initial Settings] > [License])

After going through the unit info and network steps, return to the licensing page. License each expansion controller individually in the same way as the AE-200 was licensed. For 200 units, 4 licenses (1 master and 3 expansions) are needed for each desired function.

Billing Function Setting in the Initial Settings Tool

Energy Management Block Settings

In the Initial Settings Tool, click [Unit Settings] > [Energy Management Block]. Enter the energy management block name. In [Member blocks], select the proper expansion controller and member block to be registered. Then register the address of any OA Processing units.

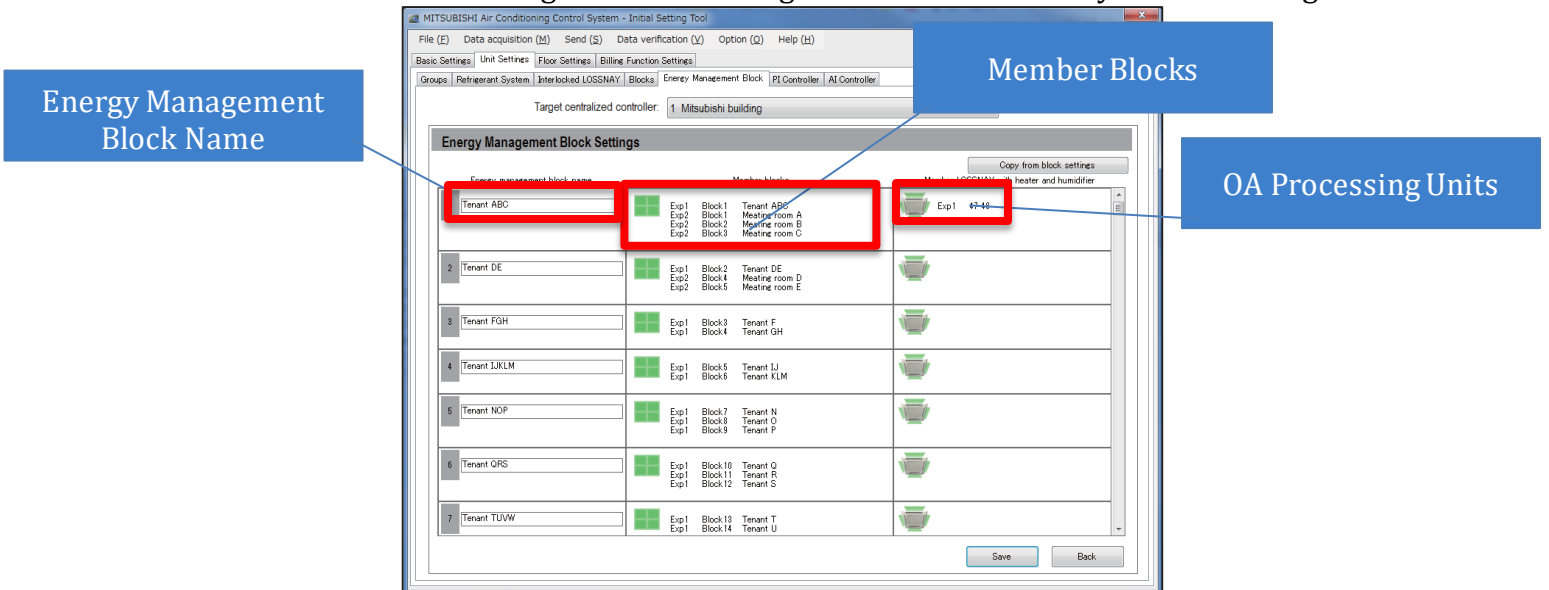


Figure 4. [Unit Settings] > [Energy Management Block]

PI Controller Settings

Click [Unit Settings] > [PI Controller]. Set the unit address for the PI controller. Enter the name of the metering device in [Metering device name]. Enter the pulse weight and the measurement units. Remember that OC and OS units must be on the same PI input.

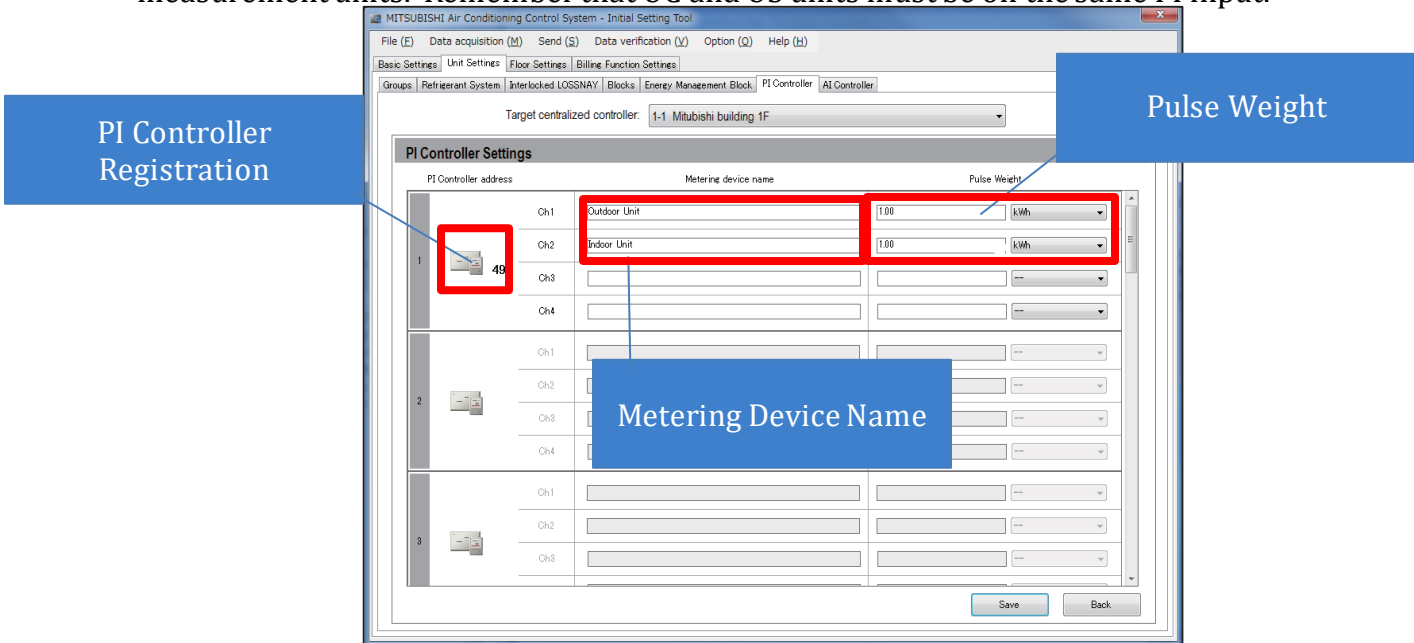


Figure 5. [Unit Settings] > [PI Controller]

Billing Function Settings

Click [Billing Function Settings] > [Billing Function]. Select the applicable options.

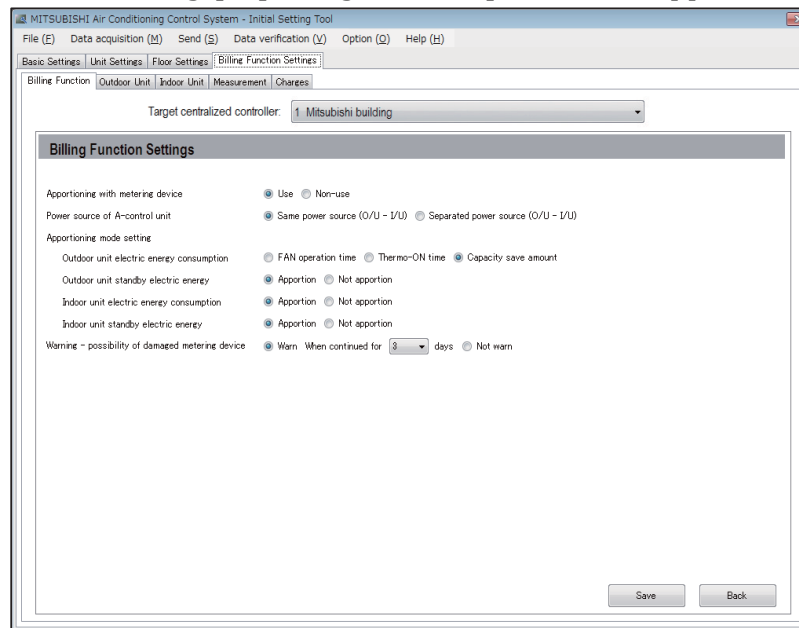
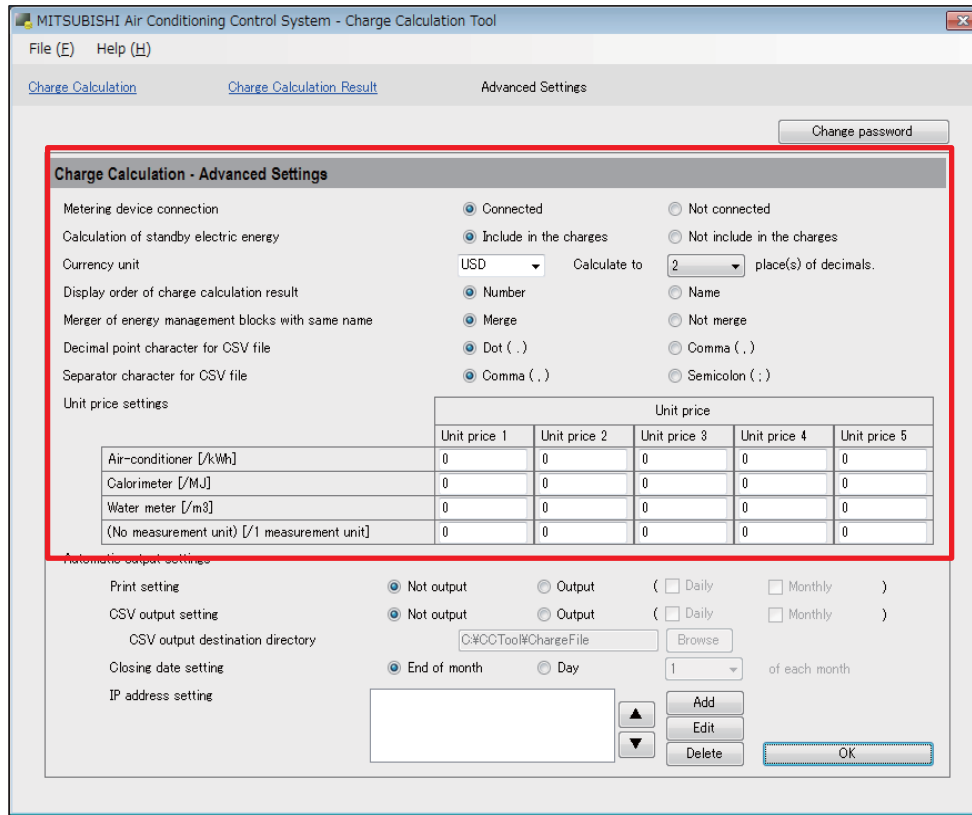


Figure 6. [Billing Function Settings] > [Billing Function]

Charge Calculation Tool

Start up the Charge Calculation Tool and select [Advanced Settings]. Set the settings to the desired options.



MITSUBISHI Air Conditioning Control System - Charge Calculation Tool

File (E) Help (H)

Charge Calculation Charge Calculation Result Advanced Settings

Change password

Charge Calculation - Advanced Settings

Metering device connection Connected Not connected

Calculation of standby electric energy Include in the charges Not include in the charges

Currency unit USD Calculate to 2 place(s) of decimals.

Display order of charge calculation result Number Name

Merger of energy management blocks with same name Merge Not merge

Decimal point character for CSV file Dot (.) Comma (,)

Separator character for CSV file Comma (,) Semicolon (;)

Unit price settings

	Unit price				
	Unit price 1	Unit price 2	Unit price 3	Unit price 4	Unit price 5
Air-conditioner [kWh]	0	0	0	0	0
Calorimeter [MJ]	0	0	0	0	0
Water meter [m ³]	0	0	0	0	0
(No measurement unit) [1 measurement unit]	0	0	0	0	0

Automatic output settings

Print setting Not output Output (Daily Monthly)

CSV output setting Not output Output (Daily Monthly)

CSV output destination directory C:\CCTool\ChargeFile Browse

Closing date setting End of month Day 1 of each month

IP address setting

Add Edit Delete OK

Figure 7. Charge Calculation Tool Advance Settings