

MANUFACTURED FOR:
MITSUBISHI ELECTRIC US, INC.

EH03-MPA-MB, EH03-MPA-M, EH03-MPA-SB, EH03-MPA-S, EH03-SVZ-S,
EH05-MPA-MB, EH05-MPA-M, EH05-MPA-SB, EH05-MPA-S, EH05-SVZ-M, EH05-SVZ-S,
EH08-MPA-MB, EH08-MPA-M, EH08-MPA-SB, EH08-MPA-S, EH08-SVZ-M, EH08-SVZ-S,
EH10-MPA-MB, EH10-MPA-M, EH10-MPA-L, EH10-MPA-LB, EH10-SVZ-M,
EH15-MPAS-L, EH15-MPAS-LB,
EH17-MPAS-L, EH17-MPAS-LB

Electric Heat Kit

For use with:

PVIFY-P-NAMU-E(1) / MVZ-A-AA4(7) / SVZ-KP-NA / PVA-A-AA4(7)
Multi-Position Air Handler

PARTS MANUAL

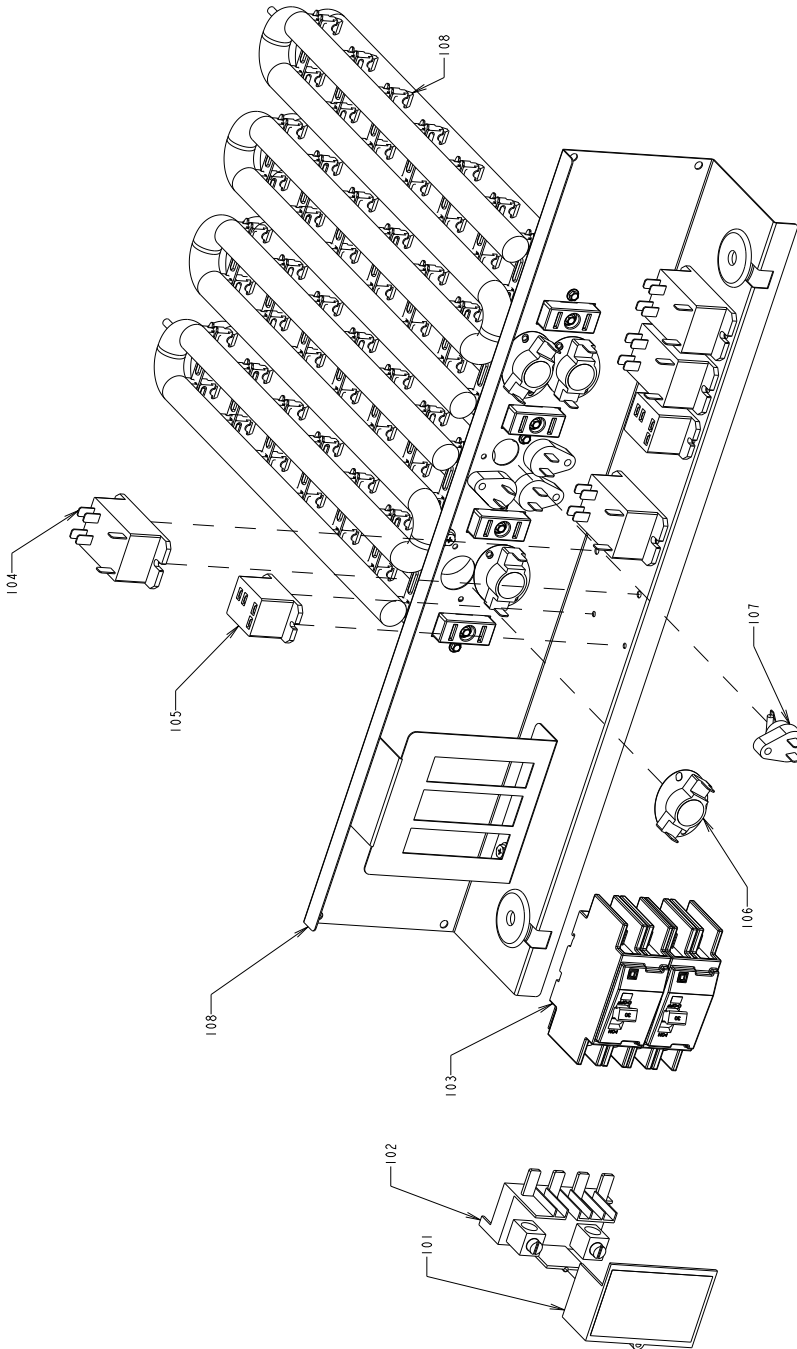
Table of Contents

1. Diagrams	3
EH10-MPA-L(B), EH15-MPAS-L(B), EH17-MPAS-L(B)	3
EH03-MPA-M(B), EH05-MPA-M(B), EH08-MPA-M(B), EH10-MPA-M(B), EH05-SVZ-M, EH08-SVZ-M, EH10-SVZ-M	4
EH03-MPA-S(B), EH05-MPA-S(B), EH08-MPA-S(B), EH03-SVZ-S, EH05-SVZ-S, EH08-SVZ-S	5
2. Parts List	6

1. Diagrams

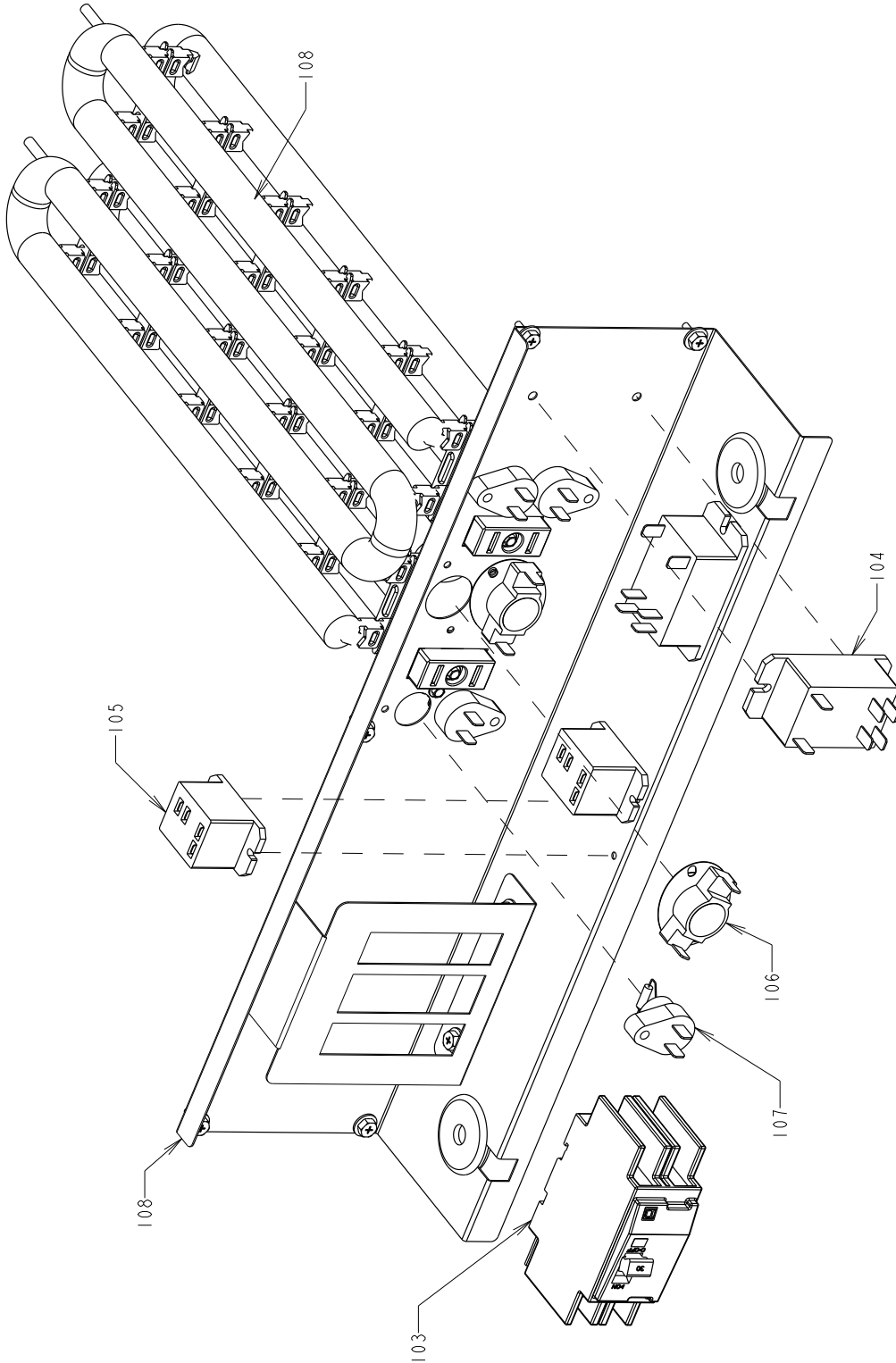
EH10-MPA-L(B), EH15-MPAS-L(B), EH17-MPAS-L(B)

Actual configuration and number of components may differ from image shown below.



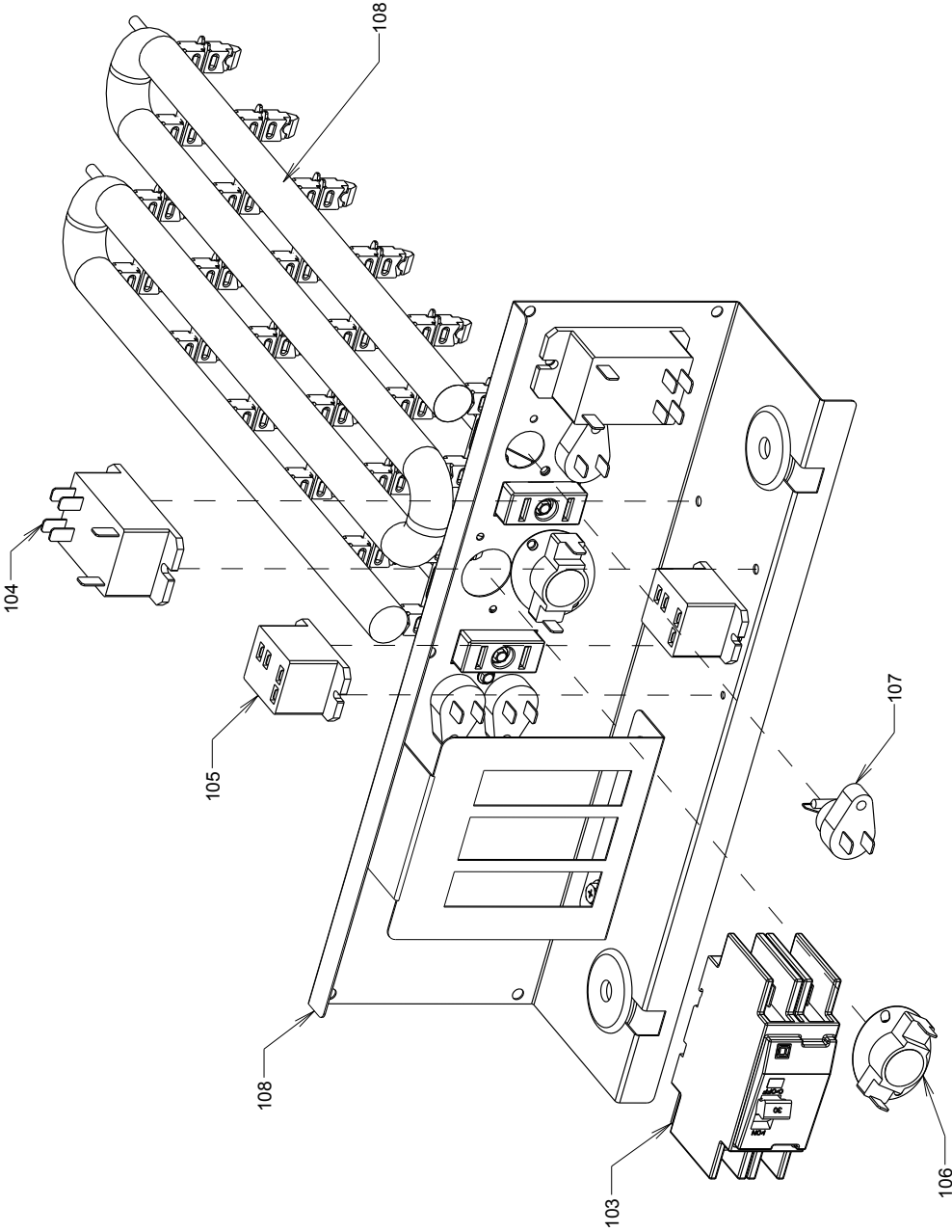
EH03-MPA-M(B), EH05-MPA-M(B), EH08-MPA-M(B), EH10-MPA-M(B), EH05-SVZ-M, EH08-SVZ-M, EH10-SVZ-M

Actual configuration and number of components may differ from image shown below.



EH03-MPA-S(B), EH05-MPA-S(B), EH08-MPA-S(B), EH03-SVZ-S, EH05-SVZ-S, EH08-SVZ-S

Actual configuration and number of components may differ from image shown below.



2. Parts List

External Parts

No.	Part No.	Part Name	Spec.	External Parts											Notes for models	Revision info.			
				EH03-SVZ-S	EH05-SVZ-S	EH08-SVZ-S	EH03-MPA-S(B)	EH08-MPA-S(B)	EH03-MPA-M(B)	EH05-MPA-M(B)	EH08-MPA-M(B)	EH10-MPA-M(B)	EH10-MPA-L(B)	EH15-MPAS-L(B)			EH17-MPAS-L(B)		
101	0200-137-003P	SINGLE POINT COVER														1	1		
102	0200-137-001P	SINGLE POINT BLOCK														1	1		
103	0200-155-002P	CIRCUIT BREAKER 20AMP		1			1		1										
103	0200-155-004P	CIRCUIT BREAKER 30AMP			1					1									
103	0200-155-006P	CIRCUIT BREAKER 40AMP															1		
103	0200-155-007P	CIRCUIT BREAKER 45AMP				1		1									1		
103	0200-155-008P	CIRCUIT BREAKER 50AMP									1							1	
103	0200-155-009P	CIRCUIT BREAKER 60AMP										1	1					1	
104	0200-213-001P	240VAC RELAY		1	1	2	1	2	1	1	2	2	2	4	4			relay 240VAC	
105	0200-213-002P	12VDC PILOT RELAY		1	1	2	1	2	1	1	2	2	2	2	2			relay 12VDC	
106	0200-217-001P	TOD 180/80															4	thermal overload	
106	0200-194-001P	TOD 160/45				2								2	4			thermal overload	
106	0200-222-001P	TOD 160/55										2						thermal overload	
106	0200-223-001P	TOD 150/55						2			2							thermal overload	
106	0200-239-001P	TOD 130/45			1													thermal overload	
106	0200-183-001P	TOD 140/45								1								thermal overload	
106	0200-224-001P	TOD 120/45		1			1		1									thermal overload	
107	0200-218-001P	FUSIBLE LINK 117C															4	thermal fuse	
107	0200-200-001P	FUSIBLE LINK 110C						4										thermal fuse	
107	0200-196-001P	FUSIBLE LINK 104C										2		4				thermal fuse	
107	0200-150-001P	FUSIBLE LINK 98C				4					4		2					thermal fuse	
107	0200-086-001P	FUSIBLE LINK 93C																thermal fuse	
107	0200-195-001P	FUSIBLE LINK 84C			2													thermal fuse	
107	0200-228-001P	FUSIBLE LINK 77C		2						2								thermal fuse	
107	0200-221-001P	FUSIBLE LINK 72C					2		2									thermal fuse	
108	6000-140-501	HEATER ASSM 3KW SMALL					*											Complete heater assm	
108	6000-140-502	HEATER ASSM 5KW SMALL																Complete heater assm	
108	6000-140-503	HEATER ASSM 8KW SMALL						*										Complete heater assm	
108	6000-140-504	HEATER ASSM 3KW SMALL		*														Complete heater assm	
108	6000-140-505	HEATER ASSM 5KW SMALL			*													Complete heater assm	
108	6000-140-506	HEATER ASSM 8KW SMALL				*												Complete heater assm	
108	6000-139-503	HEATER ASSM 3KW MEDIUM							*									Complete heater assm	
108	6000-139-504	HEATER ASSM 5KW MEDIUM								*								Complete heater assm	
108	6000-139-501	HEATER ASSM 8KW MEDIUM									*							Complete heater assm	
108	6000-139-502	HEATER ASSM 10KW MEDIUM										*						Complete heater assm	
108	6000-138-501	HEATER ASSM 10KW LARGE											*					Complete heater assm	
108	6000-138-502	HEATER ASSM 15KW LARGE												*				Complete heater assm	
108	6000-138-503	HEATER ASSM 17KW LARGE													*			Complete heater assm	

Notes:

- * In the event of a heater coil/element failure, the entire heater assembly will have to be replaced. Item 108.
- ** All components individually packaged and labeled with Mitsubishi service part number
- *** Actual configuration and number of components may differ from image shown on previous pages

This product is designed and intended for use in the residential, commercial and light-industrial environment.

Please be sure to put the contact address/telephone number on this manual before handing it to the customer.

Manufactured for:
MITSUBISHI ELECTRIC US, INC.

www.mitsubishielectric-usa.com

Toll Free: 800-433-4822