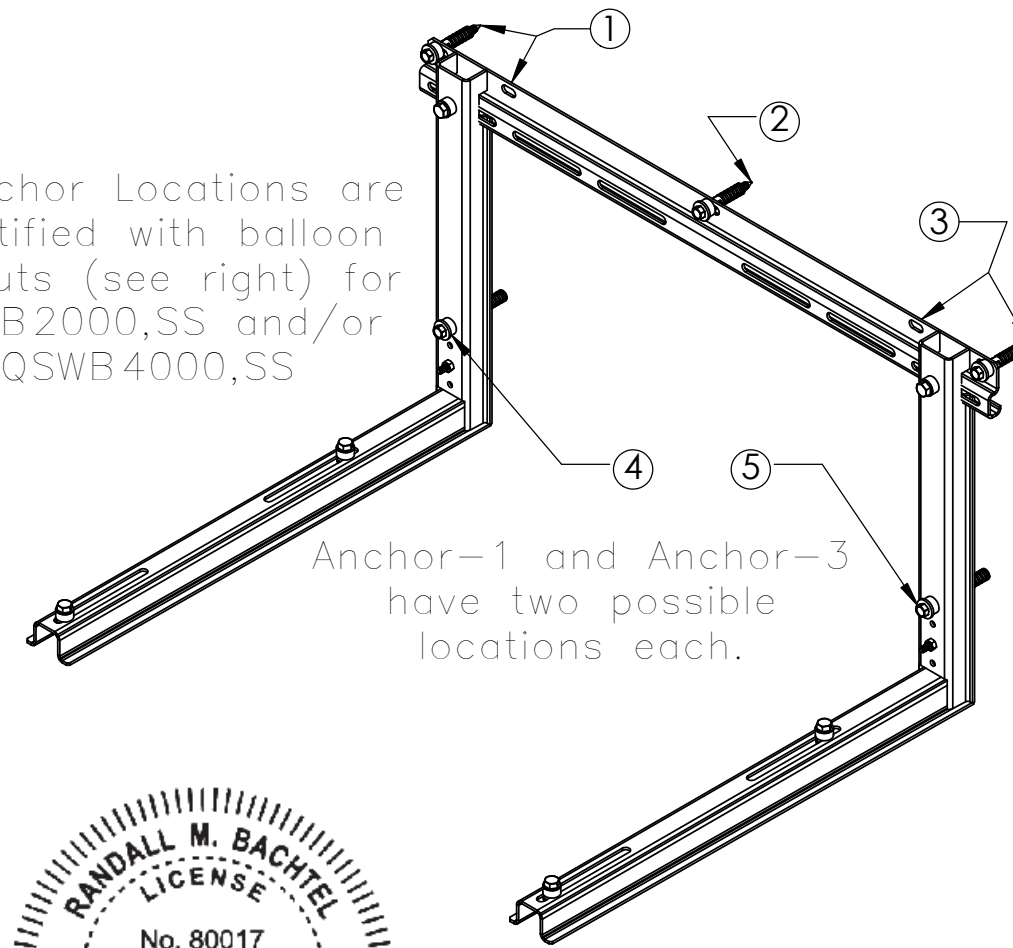
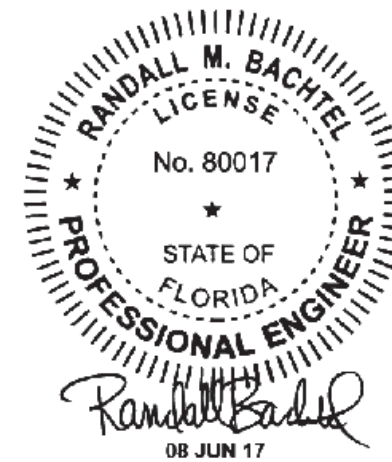


5 Anchor Locations are identified with balloon callouts (see right) for QSWB2000,SS and/or QSWB4000,SS



Anchor-1 and Anchor-3 have two possible locations each.



FL-22529.2

TABLE-3 CONDENSER UNIT (MAXIMUM) SPECIFICATIONS

Item	QSWB 2000 QSWB 2000SS	QSWB 4000 QSWB 4000SS
Max. Length (a) in.	42	48
Max. Height (b) in.	48	54
Max. Depth (c) in.	20	20
Max. Frontal Area (a x b) sq. in.	2020	2300
Max. Lateral Area (b x c) sq. in.	960	1100
Max. Weight (lbs.)	350	500

QSWB Part Number Notation

Diversitech QSWB4000 is equivalent to QSWB2000M-1. QSWB2000 and QSWB4000 each come in stainless steel versions. These two part numbers have a suffix "SS" Ex. QSWB2000SS and QSWB4000SS

UNLESS OTHERWISE SPECIFIED:
DIMENSIONS ARE IN INCHES [MILLIMETERS]
TOLERANCES ARE: ANGLES ±1.0°
FRACTIONAL SIZES X/Y ±1/64

INCHES	MILLIMETERS
X = ±0.1	[X = ±2.5]
.XX = ±0.01	[.X = ±1.3]
.XXX = ±0.005	[.XX = ±0.13]

THIRD ANGLE PROJECTION



CONFIDENTIAL - PROPRIETARY - DO NOT COPY
THE INFORMATION SET FORTH IN THIS DOCUMENT AND RELATED INFORMATION IS THE CONFIDENTIAL PROPERTY OF DIVERSITECH CORPORATION, AND IS NOT TO BE COPIED OR REPRODUCED OR DISTRIBUTED IN ANY FORM WITHOUT PRIOR WRITTEN PERMISSION FROM DIVERSITECH CORPORATION.

MATERIAL: AISI 1045 Steel / Sy >= 59ksi
DWG. NO. A/C Condensing Unit Wall Bracket Systems
DESCRIPTION: Models: QSWB2000, QSWB2000SS, QSWB4000 & QSWB4000SS

REV. **A**
28AUG17
SHEET 1 OF 5

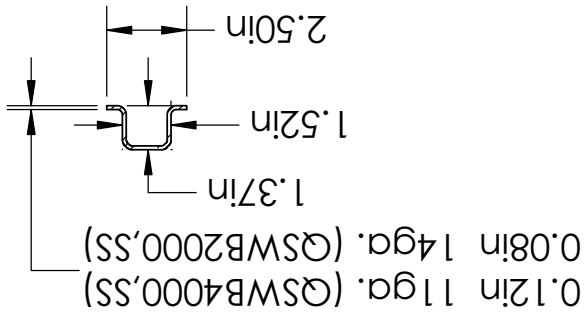
REV	A	MATERIAL: AISI 1045 Steel / Sy >= 59ksi
		DWG. NO. 28AUG17
SHEET 2 OF 5		DESCRIPTION: Models: QSWB2000, QSWB2000SS, QSWB4000 & QSWB4000SS



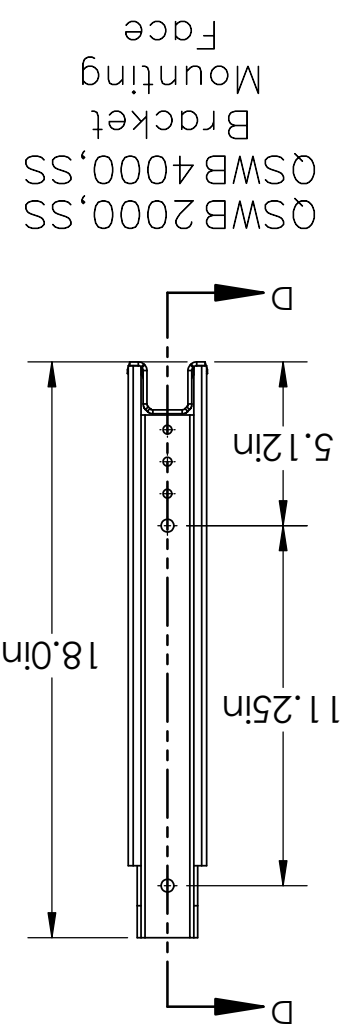
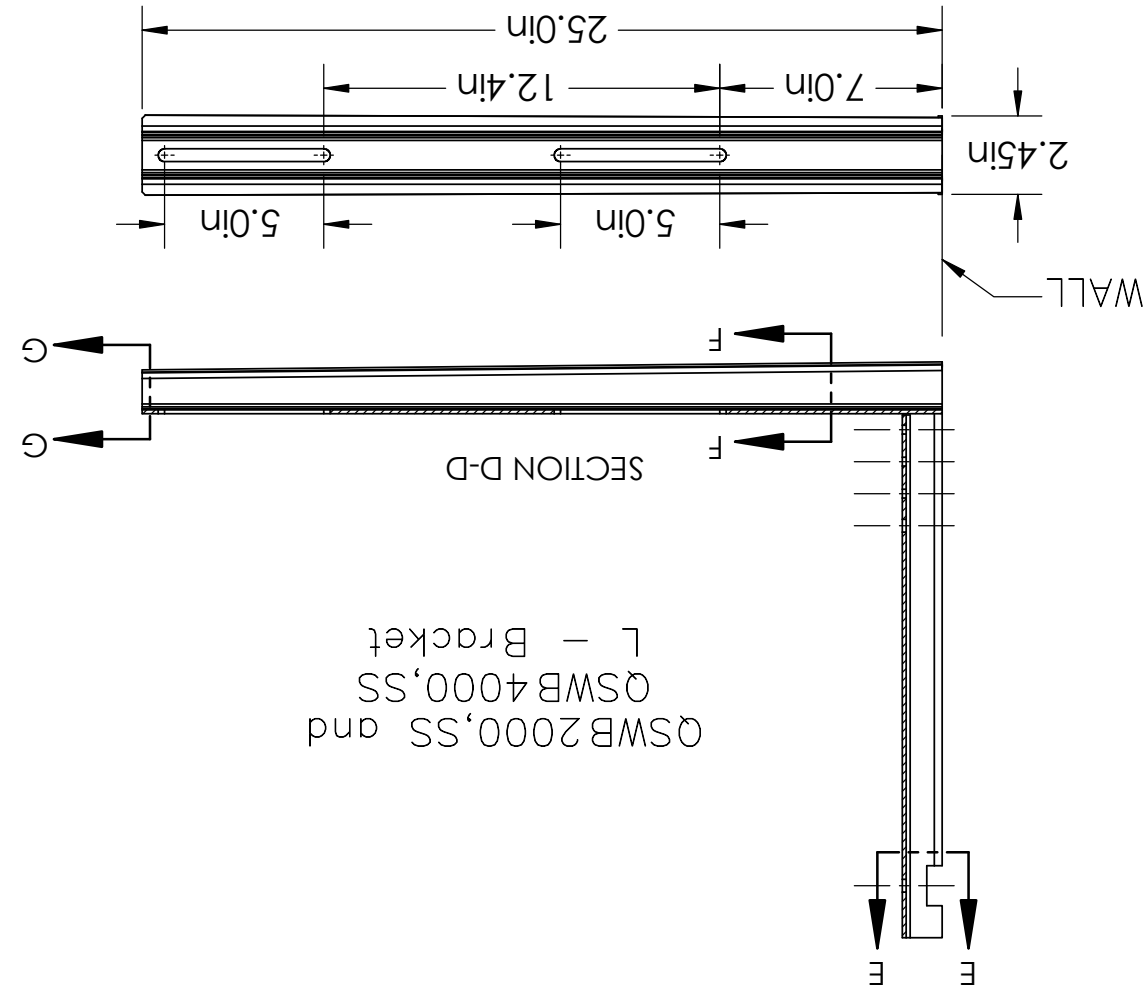
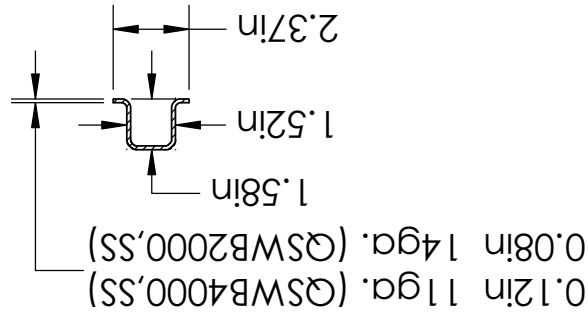
UNLESS OTHERWISE SPECIFIED:
 DIMENSIONS ARE IN INCHES (MILLIMETERS)
 TOLERANCES ARE: ANGLES ±1.0°
 FRACTIONAL SIZES X/Y ±1/64
 INCHES (MILLIMETERS)
 X = ±0.1 [X = ±2.5]
 XX = ±0.01 [XX = ±1.3]
 XXX = ±0.005 [XXX = ±0.13]
 THIRD ANGLE PROJECTION

Equipment Mounting Face
 QSWB2000,SS/QSWB4000,SS

SECTION G-G

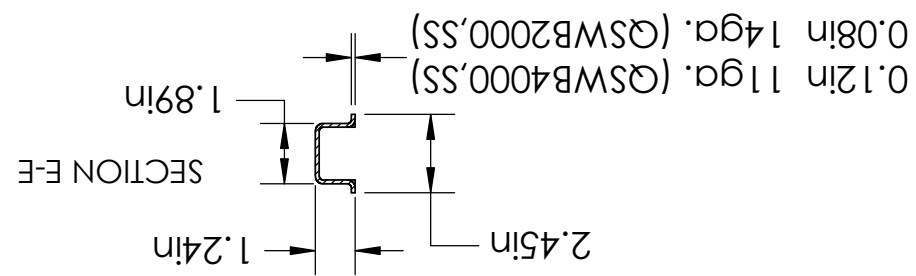


SECTION F-F

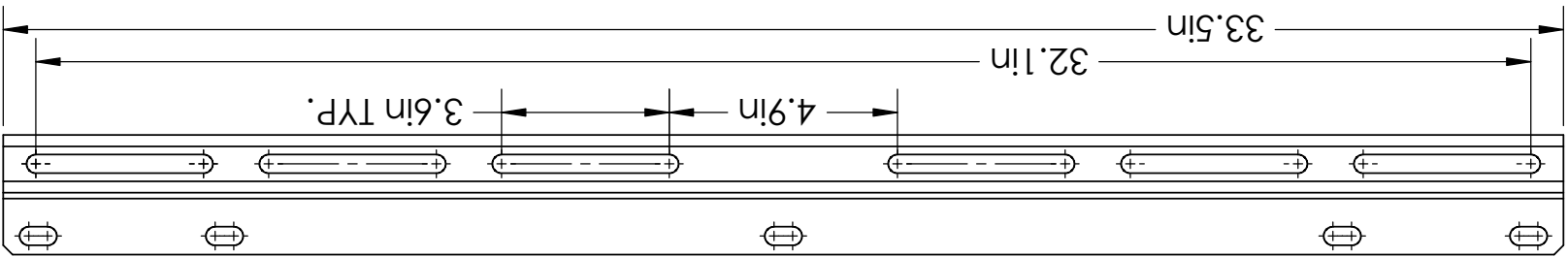


L - Bracket
 QSWB2000,SS and
 QSWB4000,SS

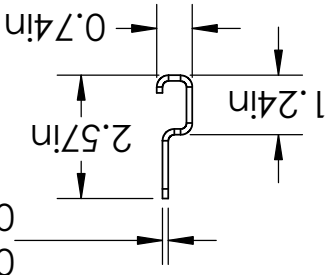
SECTION E-E



QSWB2000,SS and QSWB4000,SS Wall Bracket Systems are dimensionally identical except for the sheet metal thickness used to form each of the components. QSWB2000 uses 14ga. stock. QSWB4000 uses 11ga. stock.



Horizontal Glide Track
 QSWB2000,SS and QSWB4000,SS



0.12in 11ga. (QSWB4000,SS)
 0.08in 14ga. (QSWB2000,SS)



4

3

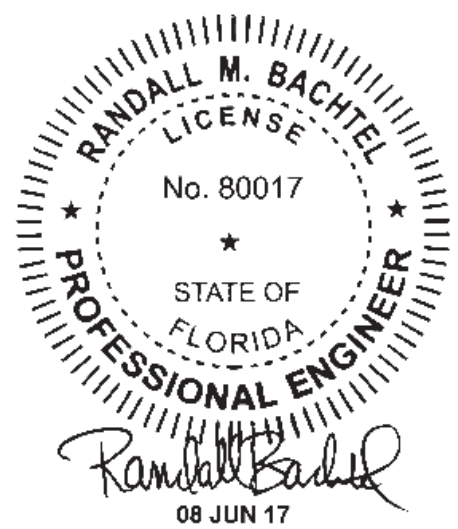
2

1

QSWB Wall Mounting Brackets

Installation Instructions – Professional Installation Required

1. Ensure that the supporting wall structure that the bracket will be mounted on is capable of supporting the weight of the air conditioner unit and bracket and can support the anchor loads as indicated on the QSWB specification sheet, Pgs. 1 & 3.
2. Use the correct size wall mounting bracket (QSWB2000 or QSWB4000) to match up with the condenser unit weight. See Pg-1.
3. Remove the three wall mounting bracket parts and bag of hardware from the box.
4. Mount the horizontal glide track to the wall using 3 of the 5 anchors. Lag screws for wood and expansion anchors for concrete. Alternate anchors can be used by following the anchor schedule found in the QSWB specification sheet, Pg-4.
5. Mount the L-brackets to the guide track by using the hardware provided. (NOTE: Insert the 1 \square x 3/8 \square bolts and washers thru the L-bracket into the spring nuts).
6. Insert 1/4-20 carriage bolts with nuts through the bottom side of the L-bracket for equipment mounting. Place rubber washer (vibration and noise reducers) and nut to the top of the L-bracket equipment mounting bar.



UNLESS OTHERWISE SPECIFIED:
 DIMENSIONS ARE IN INCHES [MILLIMETERS]
 TOLERANCES ARE: ANGLES $\pm 1.0^\circ$
 FRACTIONAL SIZES X/Y $\pm 1/64$

INCHES	MILLIMETERS
.X = ± 0.1	[X = ± 2.5]
.XX = ± 0.01	[.X = ± 1.3]
.XXX = ± 0.005	[.XX = ± 0.13]

THIRD ANGLE PROJECTION



CONFIDENTIAL - PROPRIETARY - DO NOT COPY THE INFORMATION SET FORTH IN THIS DOCUMENT AND RELATED INFORMATION IS THE CONFIDENTIAL PROPERTY OF DIVERSITECH CORPORATION, AND IS NOT TO BE COPIED OR REPRODUCED OR DISTRIBUTED IN ANY FORM WITHOUT PRIOR WRITTEN PERMISSION FROM DIVERSITECH CORPORATION. DO NOT SCALE DRAWING	MATERIAL: AISI 1045 Steel / Sy \geq 59ksi	REV. A
	DWG. NO. A/C Condensing Unit Wall Bracket Systems	28AUG17
DESCRIPTION Models: QSWB2000, QSWB2000SS, QSWB4000 & QSWB4000SS	SHEET 5 OF 5	

4

3

2

1